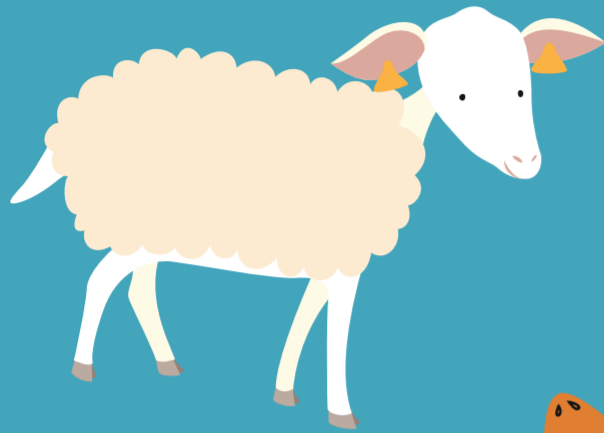
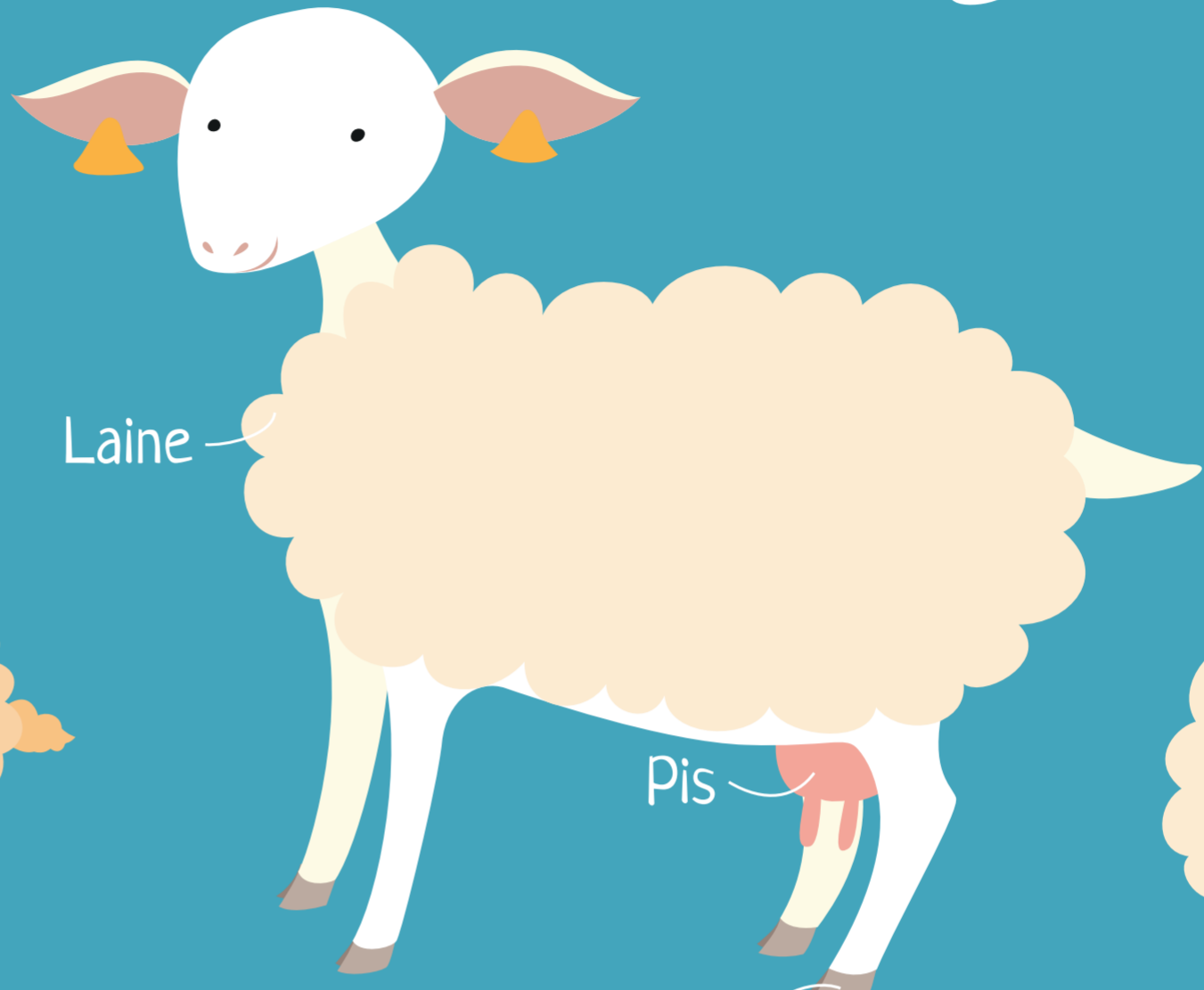


# Le MOUTON



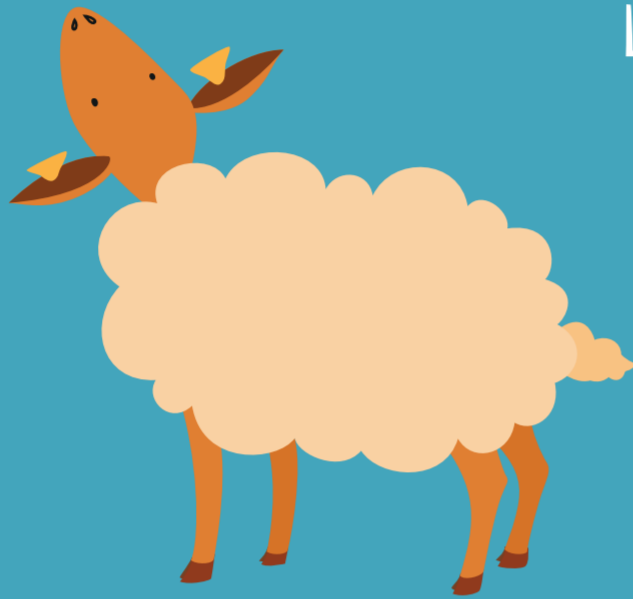
Laitier belge



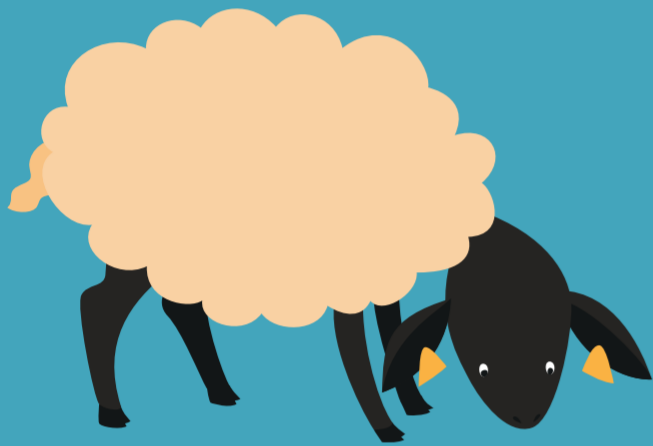
Laine

Pis

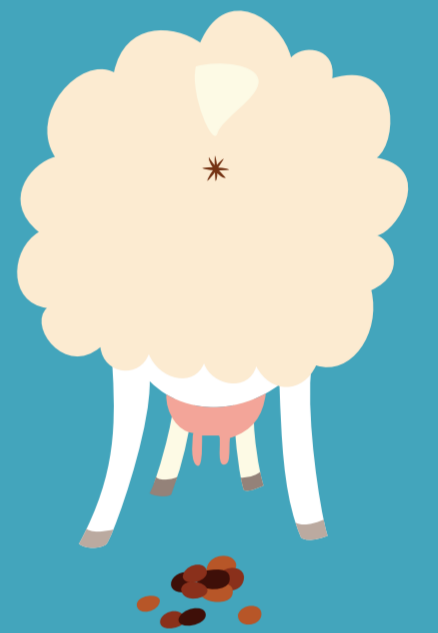
Onglon ou Sabot



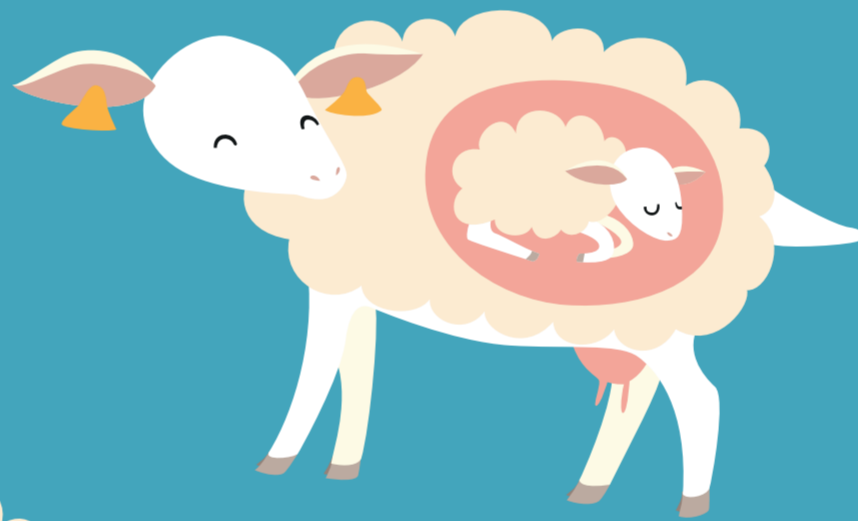
Ardennais roux



Suffolk



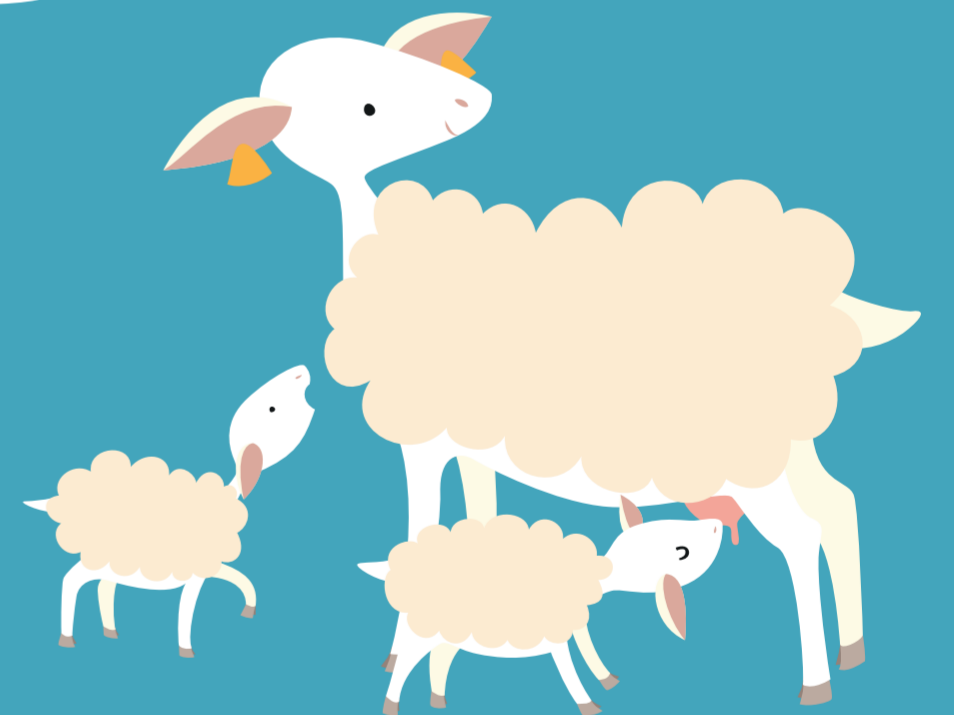
Pétoulettes ou Crottes



Gestation de 5 mois



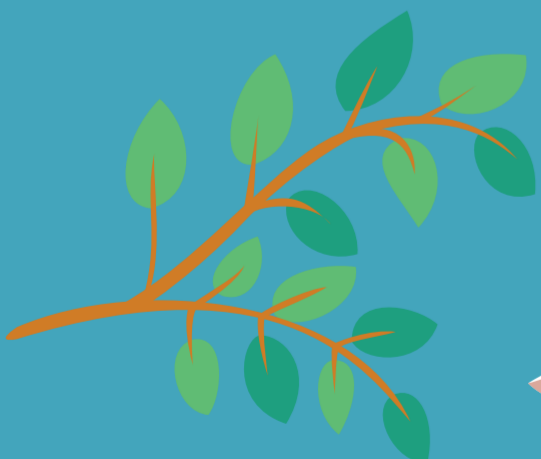
Bélier et Brebis



Agneaux

Le mouton est herbivore et il boit de l'eau.

On l'élève pour



Feuillage



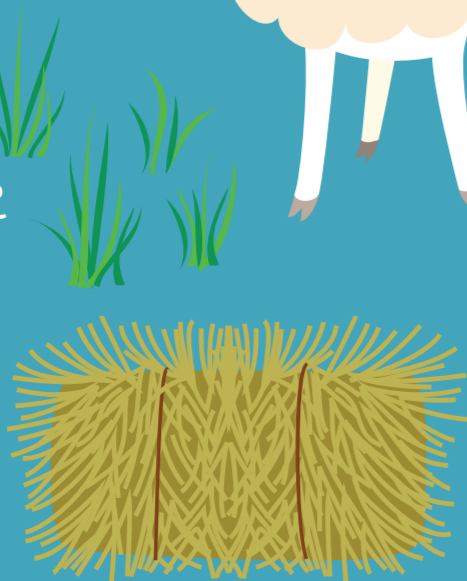
Herbe



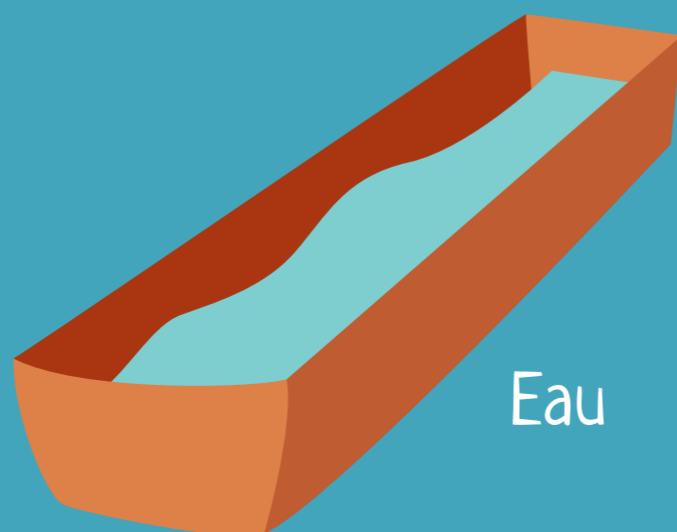
Céréales en complément



la viande



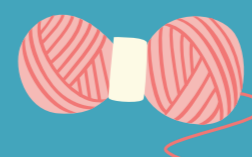
Foin



Eau



le lait, les produits laitiers



et la laine.