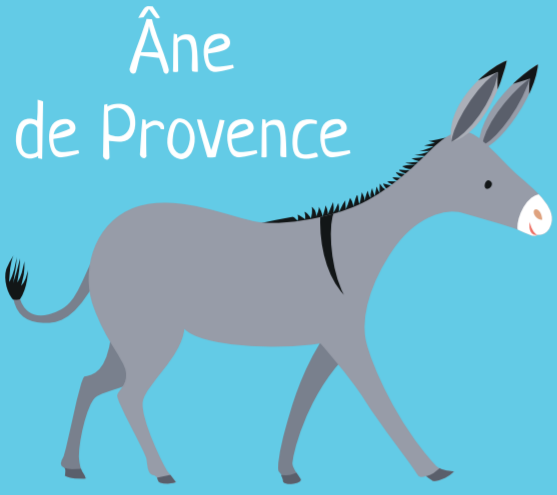


# L'ÂNE



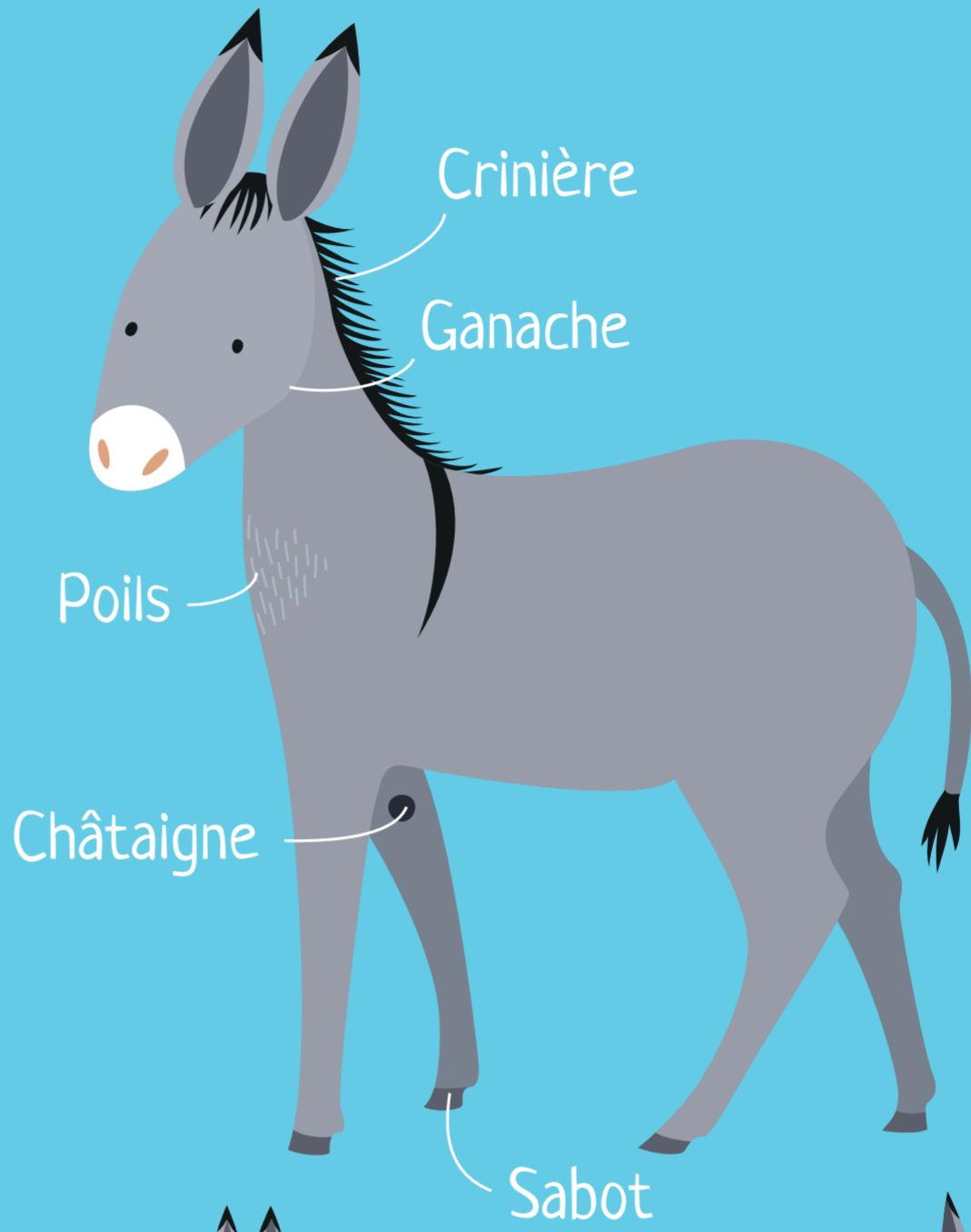
Âne de Provence



Âne du Poitou



Âne Pie d'Irlande



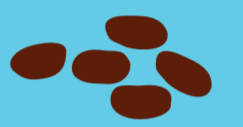
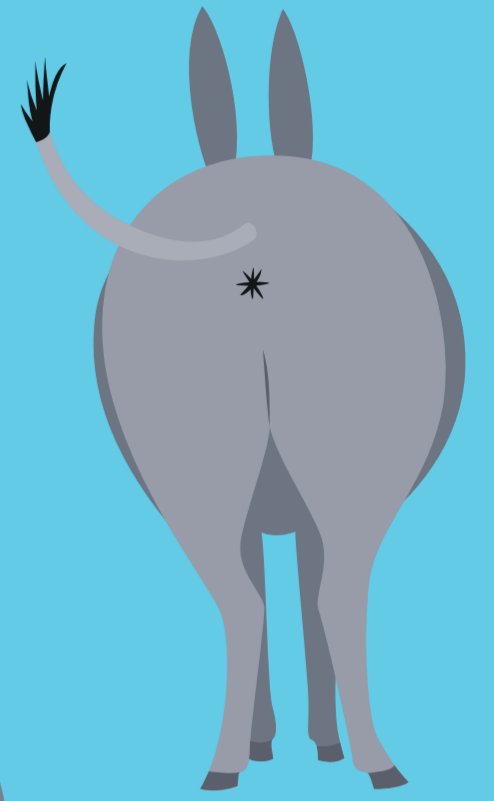
Crinière

Ganache

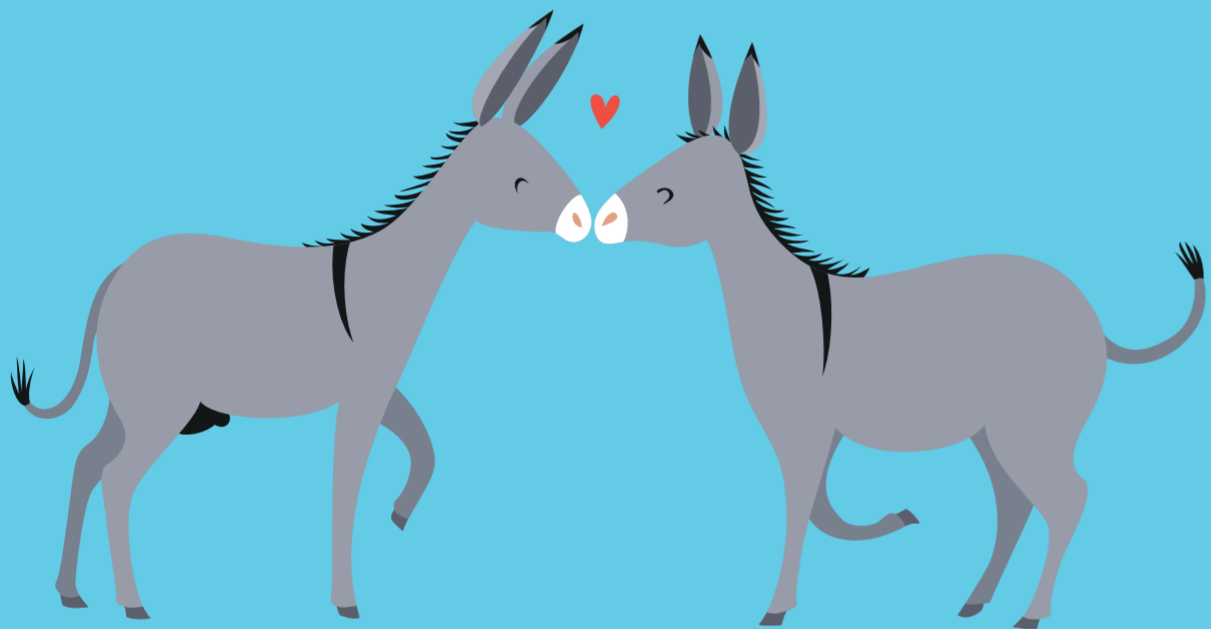
Poils

Châtaigne

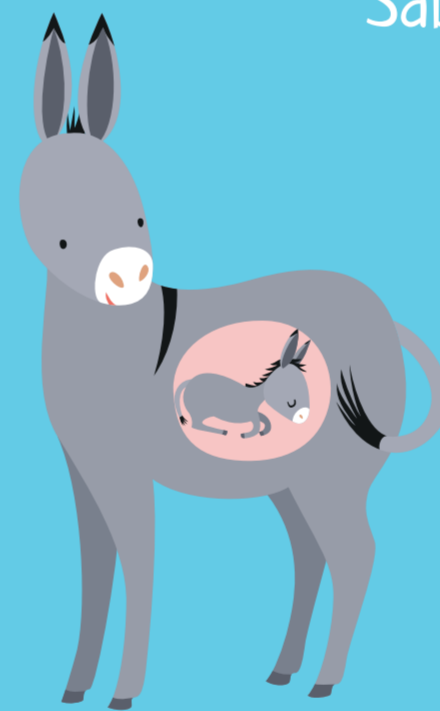
Sabot



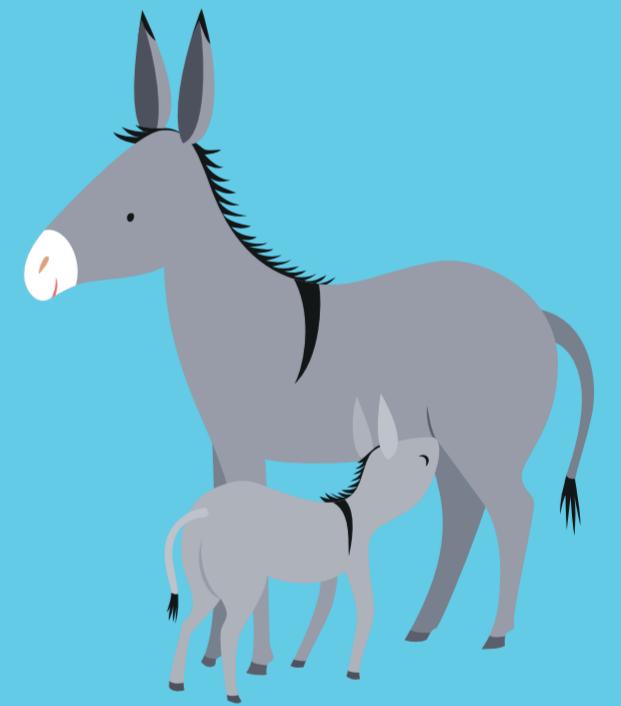
Crottin



Âne et Ânesse



Gestation de 11 à 13 mois



Ânon



Feuillage



Herbe

L'âne est herbivore et boit de l'eau.

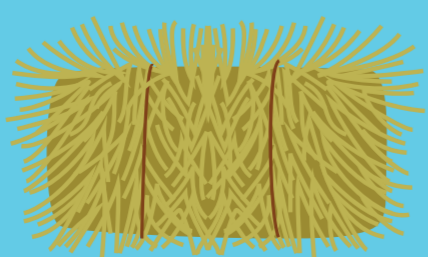
On l'éleve pour



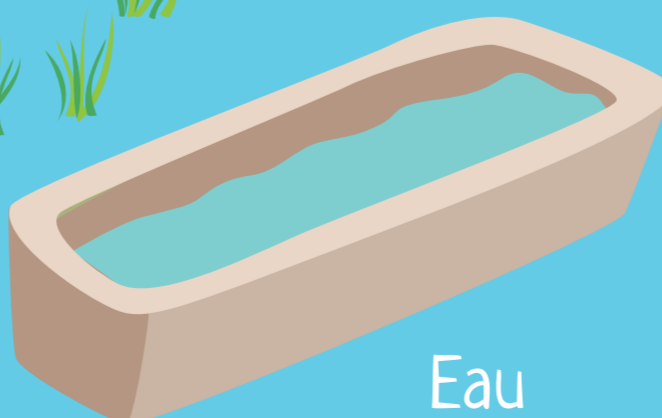
le lait, les savons, crèmes, ...



Légumes et céréales en complément



Foin



Eau



et pour le travail à la ferme ou le loisir.