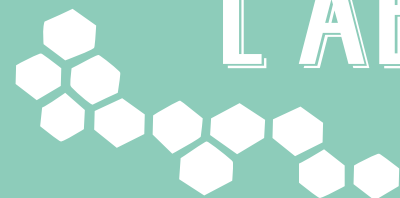


# L'ABEILLE MELLIFERE



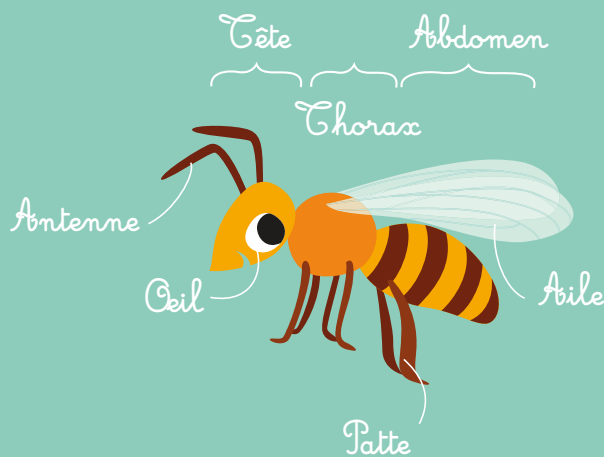
Abeyille Noire



Abeyille Carniolienne



Abeyille Buckfast



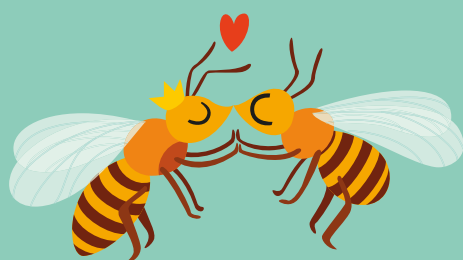
Reine



Ouvrière



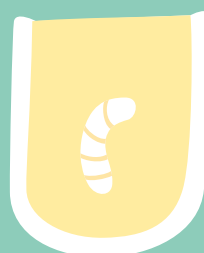
Faux-Bourdon



Reine & Faux-Bourdon



0-3 jours  
Oeuf



4-10 jours  
Larve



11-20 jours  
Nymphe



21 jours  
Abeyille

Ouvrière, tout un métier!



Jours 1-2  
Nettoyeuse



Jours 3-11  
Nourrice



Jours 12-17  
Bâtisseuse



Jours 18-21  
Gardiennne



Jour 22  
Butineuse

L'abeille mange le nectar des fleurs. En hiver, elle mange le nectar transformé en miel.



On l'élève pour



le miel



le pollen



la cire



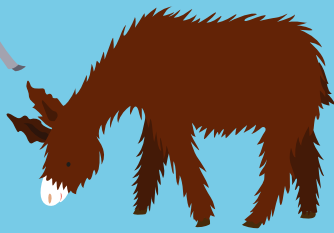
et la propolis.

# L'ÂNE

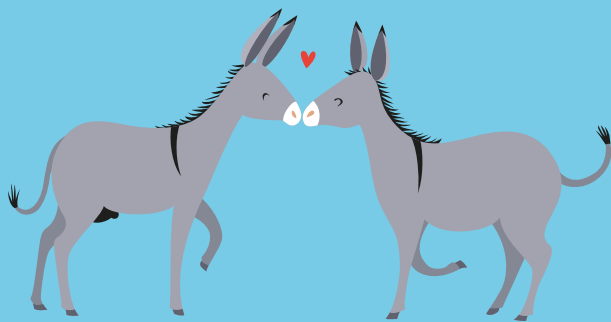
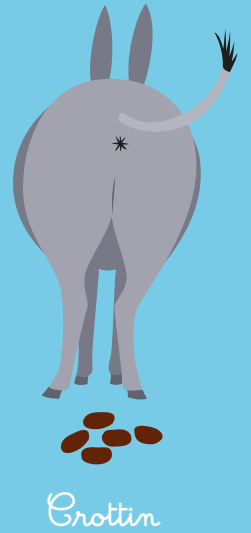
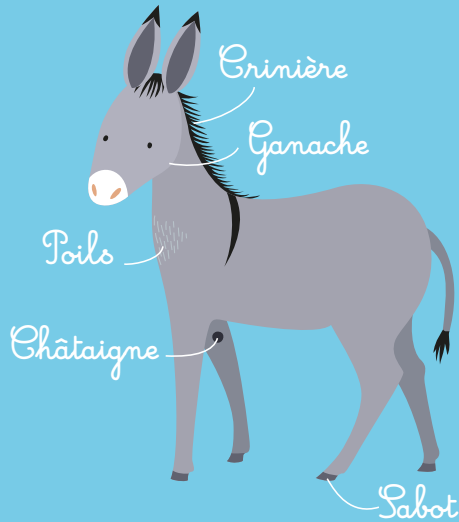
Âne  
de Provence



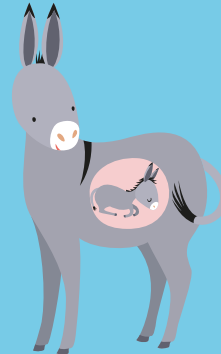
Âne  
Pie d'Irlande



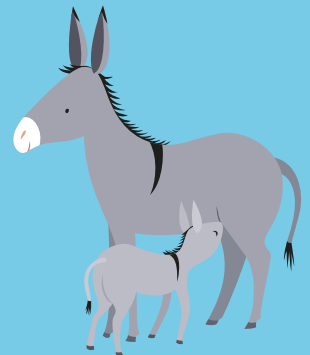
Âne du Poitou



Âne & Ânesse



Gestation  
de 11 à 13 mois



Ânon



L'âne  
est herbivore.

Herbe



Légumes & céréales  
en complément

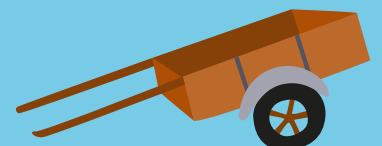


Foin

On l'élève pour



le lait: les savons, crèmes, ...



et pour le travail  
à la ferme.

# LE CANARD



Canard  
de Pékin



Canard  
de Barbarie

Canard  
de Rouen



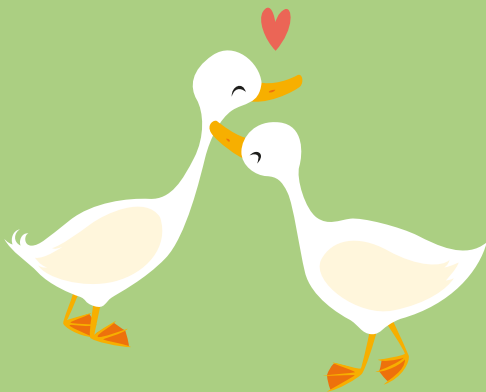
Bec

Plumes

Patte  
palmée

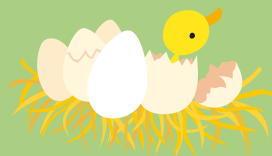


Fiente



Canard & Cane

Couvaison  
de 28 jours



Canetons

Le canard est omnivore.



Herbe

Graines

Insectes, vers, ...

On l'élève pour



la viande



le foie gras



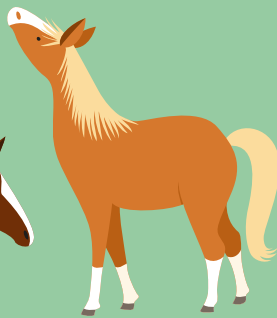
les plumes  
et duvets.

# LE CHEVAL

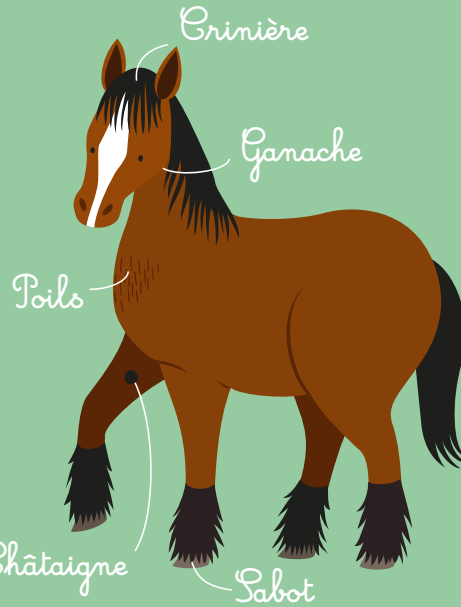
Trait ardennais



Sport Belge (SB)



Haffinger



Crottin



Stalon & Jument



Gestation

de 11 à 12 mois



Poulain



Le cheval est herbivore.



Légumes et céréales en complément



Herbe



Foin

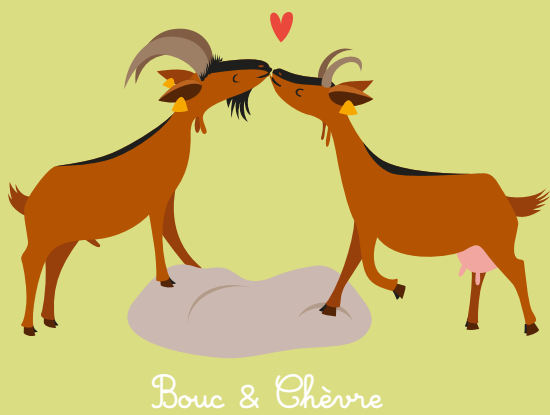
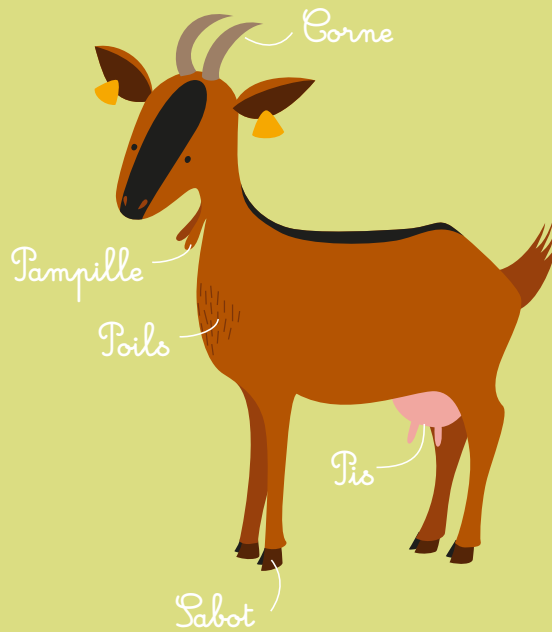
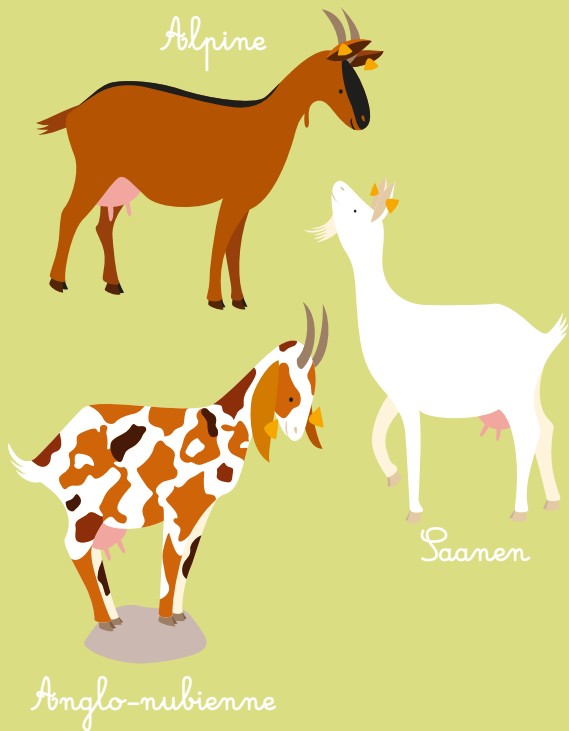


On l'élève pour le travail à la ferme, le débardage, ...



Collier de traction

# LA CHEVRE



La chèvre  
est herbivore.

Céréales  
en complément



On l'éleve pour



les produits laitiers.

# LE COCHON

Piétrain



Landrace  
belge



Large white

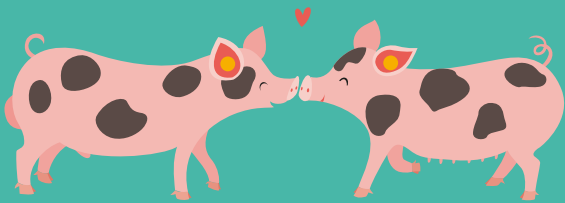
Groin

Soies

Sabot



Crotte



Verrat & Truie



Gestation de 3 mois,  
3 semaines  
et 3 jours



Porcelets ou goretts

Le cochon est omnivore.



Céréales



Pois



Pommes  
de terre



Légumes  
& fruits



Pain

On l'élève pour



la viande



la charcuterie



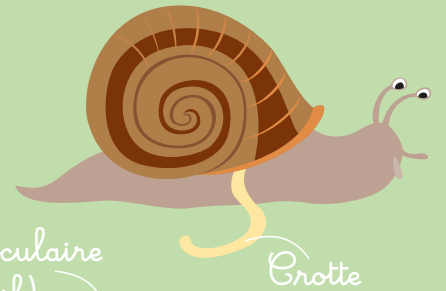
et la gélatine.

# L'ESCARGOT

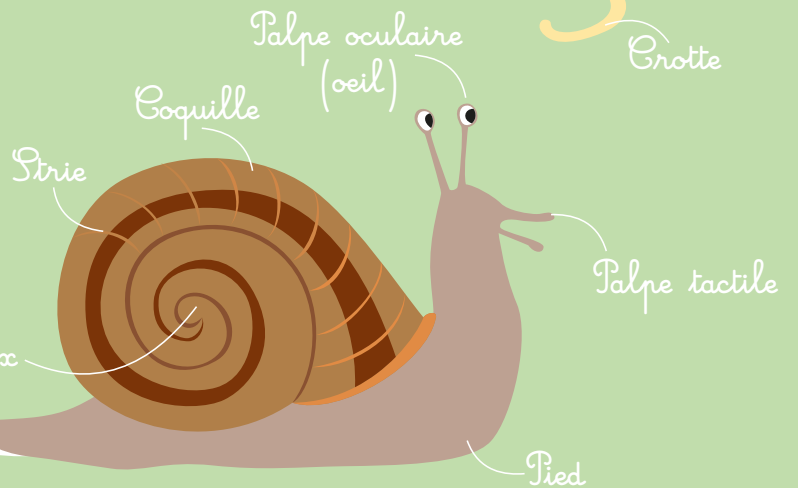
Petit-gris



Gros-gris



Crotte



Mucus

Apex

Strie

Coquille

Palpe oculaire (oeil)

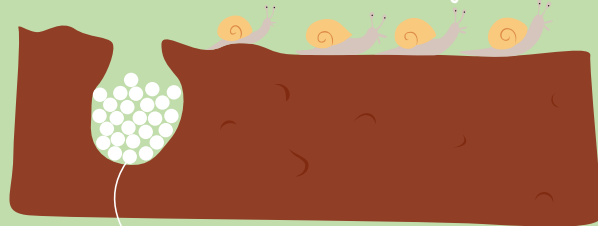
Palpe tactile

Pied



Escargot & Escargot

Bébés escargots



Oeufs - Incubation de 20 jours

L'escargot est herbivore.



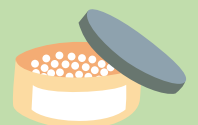
Feuillage

Herbe



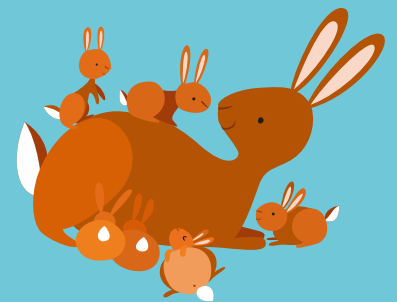
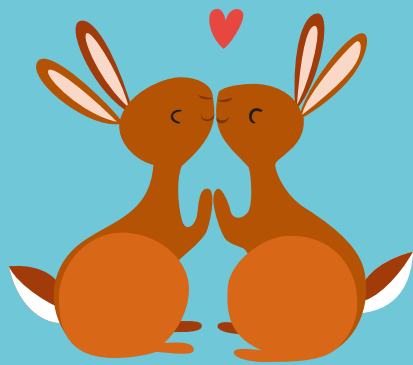
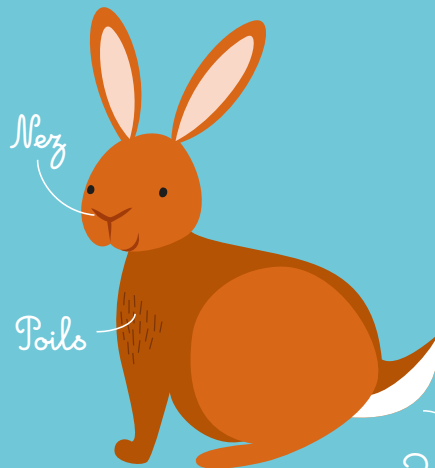
Farine riche en calcium et carbone

On l'élève pour sa chair

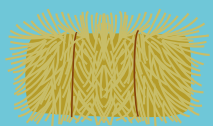


et les oeufs.

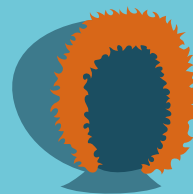
# LE LAPIN



Le lapin  
est herbivore.

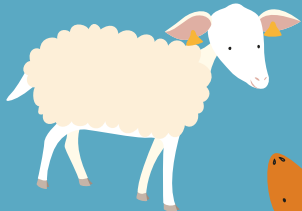


On l'élève pour

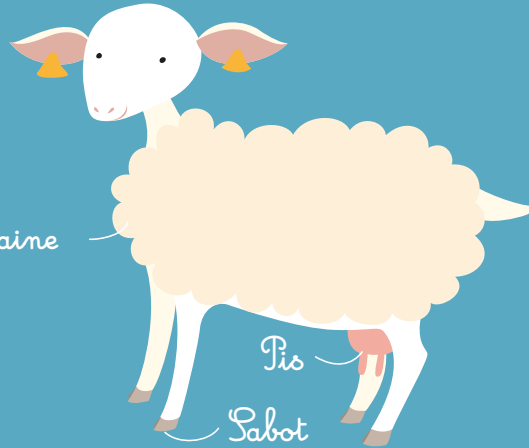




# LE MOUTON



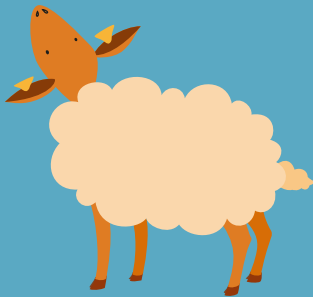
Laitier belge



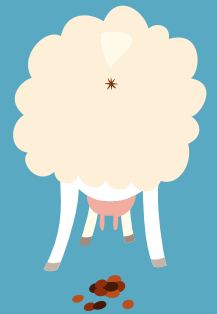
Laine

Pis

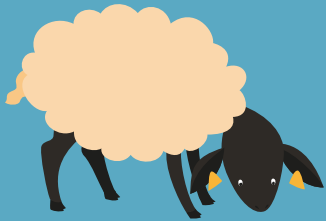
Sabot



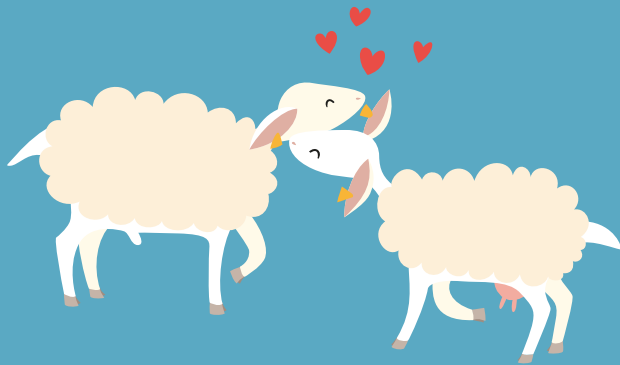
Ardennais roux



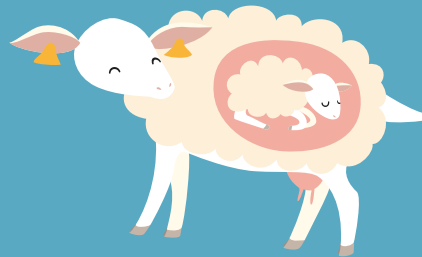
Pétoulettes  
ou crottes



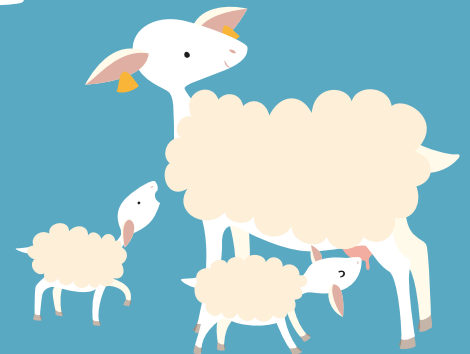
Suffolk



Bélier & Brebis



Gestation  
de 5 mois



Agneaux



Le mouton  
est herbivore.



Herbe



Céréales en  
complément

Foin



On l'élève pour



la viande

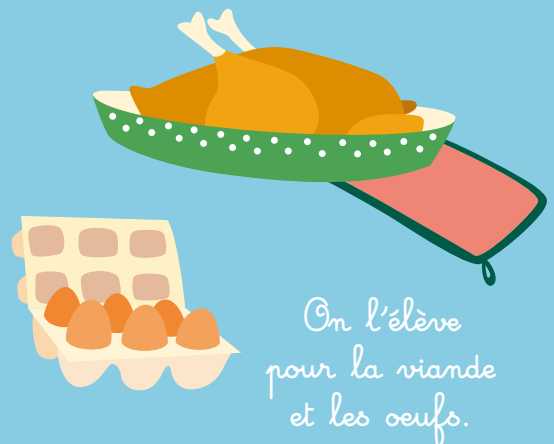
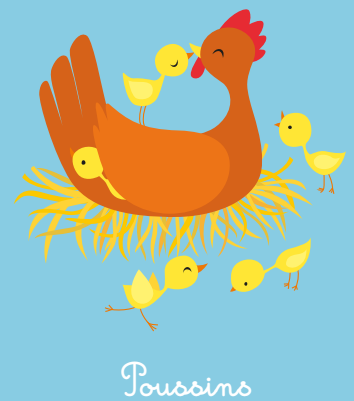
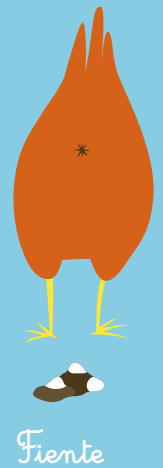


les produits laitiers

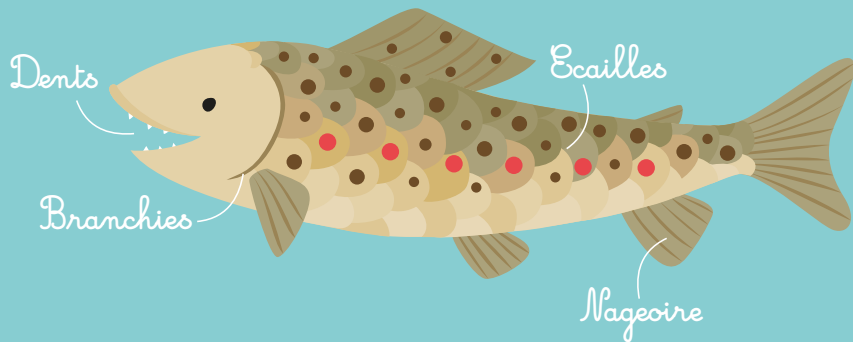
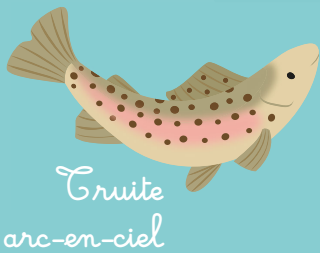
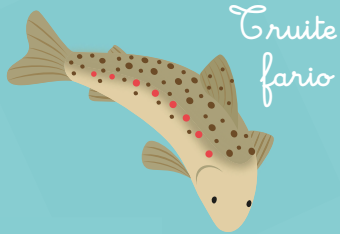


et la laine.

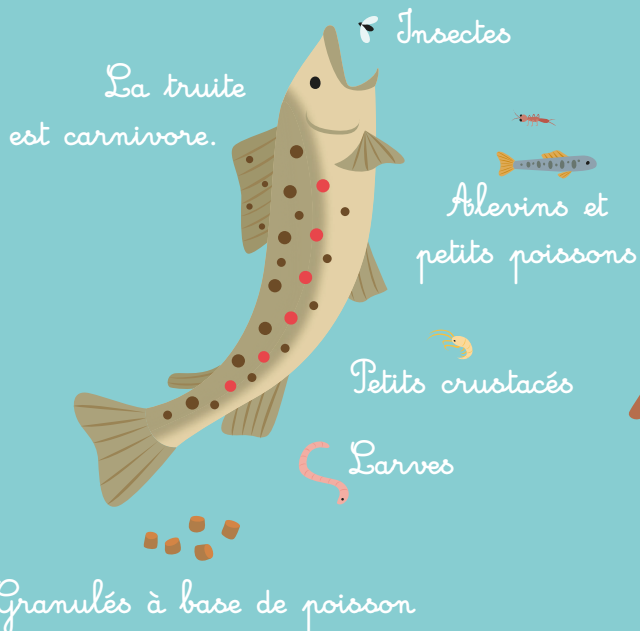
# LA POULE



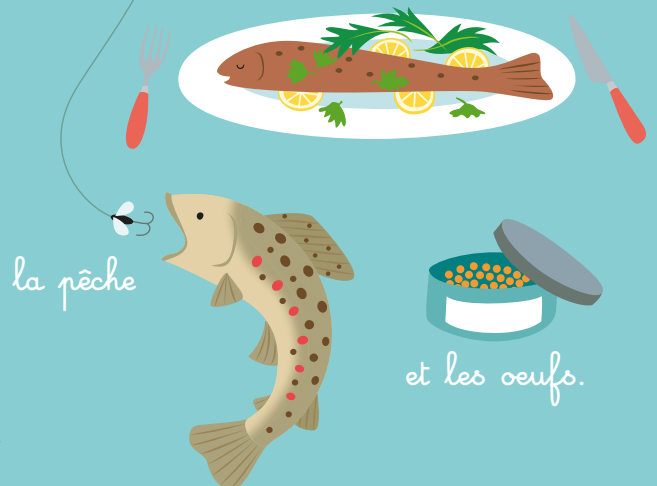
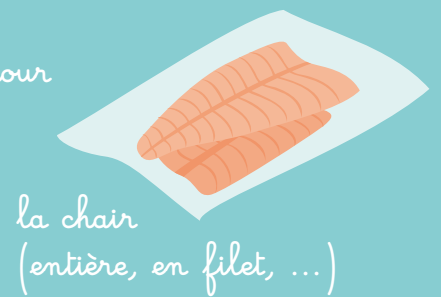
# LA TRUITE



Truite mâle & Truite femelle



On l'éleve pour



# LA VACHE LAITIERE

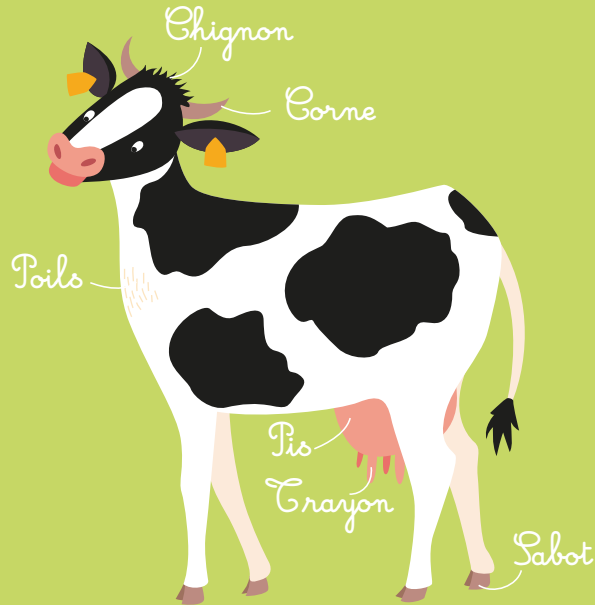
Normande



Holstein  
Pie Noire



Jersey



Bouse



Taureau & Vache



Gestation  
de 9 mois

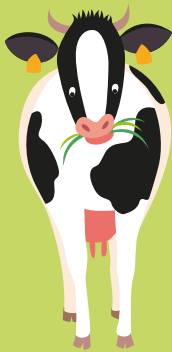


Veau

La vache est herbivore.

Mais ensilé

Céréales



Herbe

et pois fourrager  
en complément



Foin



On l'élève pour



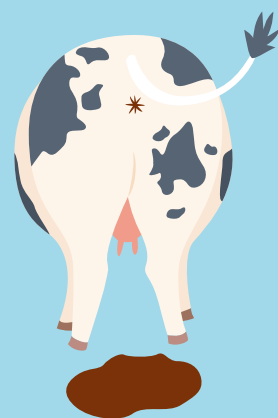
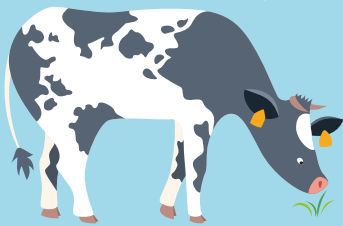
les produits laitiers



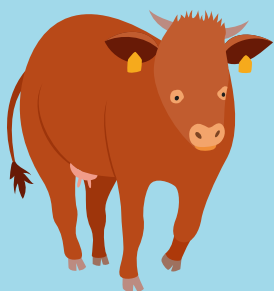
et le cuir.

# LA VACHE VIANDEUSE

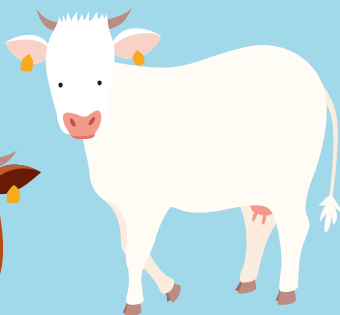
Blanc Bleu Belge



Bouse



Limousine



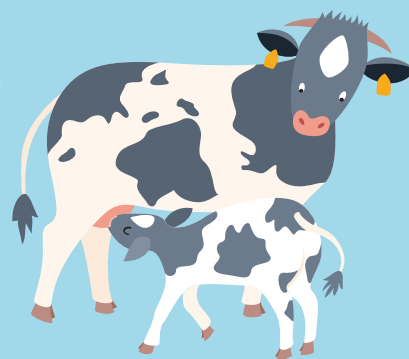
Charolaise



Gestation  
de 9 mois



Taureau & Vache



Veau

La vache  
est herbivore.

Mais ensilé

Céréales

et pois fourrager  
en complément



Herbe

Foin



On l'élève pour



la viande



et le cuir.